

Conditions Relating to Driveway Authorisation

Background

1. An authorisation must be obtained from the City of Burnside (**Council**) under section 221 of the *Local Government Act 1999* (SA) prior to the alteration of any road (including footpath or verge) within the Council area to permit vehicular access to and from land adjoining the road (unless separately approved as part of a development authorisation under the *Planning, Development and Infrastructure Act 2016*).
2. These conditions must be read in conjunction with the Authorisation Letter issued to the Applicant, and the General Terms and Conditions of Authorisation.

Driveway Specifications

Driveway and Gutter Crossing Opening/Closing/Footpath Repair

- S1.** The Applicant must complete the works on Council Land within twelve (12) months of approval.
- S2.** The proposed replacement type and colour of surfacing material must be approved by Council.
- S3.** Where a new driveway and gutter crossing is constructed to replace an existing driveway and/or gutter crossing, the existing gutter crossing must be closed and the kerb, footpath and verge area reinstated, in accordance with this specification and in material technique as per adjacent infrastructure.
- S4.** Gutter crossings and driveway aprons may not be constructed within 10 metres of an intersection except with express approval of the Council.
- S5.** Other structures on the street (eg trees, power poles, signs and services etc.) may not be moved, altered or interfered with by the Applicant except with the express, written approval of the relevant authority and Council.
- S6.** The Applicant is responsible for locating any underground services prior to commencement of works. Any costs incurred in repairing damage to services are charged to the person responsible for the damage. Please contact the relevant service authority.
- S7.** The alteration must be appropriately secured to ensure the safety of the public, in particular by the erection of warning bunting around the alteration during construction. Permanent alterations shall be constructed in accordance with the approved plans including all safety measures noted or otherwise reasonably required.
- S8.** Standard driveway apron width *across the verge area* should not exceed (unless otherwise approved):

OFFICIAL

- 4.5 m
 - 6 m for shared driveway servicing multiple dwellings.
- S9.** Maximum width (*length along the kerb*) of gutter crossings should not exceed (unless otherwise approved):
- 5.5 m
 - 7 m for shared driveway servicing multiple dwellings.
- S10.** Finished levels on driveways within 3 m of the gutter must be a minimum of 200 mm above the level of the adjacent gutter (for rain water control on low sides of the road). The cross slope of footpath portion of driveway apron must not exceed a 1 in 40 crossfall.
- S11.** The grade of the driveway must be no steeper than 1 in 5 slope (unless approved otherwise).
- S12.** Finished levels on driveways must match the existing footpath levels to ensure that there are no steps, depressions or other tripping hazards within the pedestrian walkway. If levels cannot be matched, the footpath alongside the driveway must be ramped at a slope no steeper than 1 in 40. Ramping of the footpath must be approved by Council.
- S13.** The Council will determine the minimum distance required from the closest point of the driveway to a street tree. This will be informed by the species and size of street tree present. For new street tree plantings a minimum distance of 1.5 metres is required. A 1 metre clearance to stobie poles is required.
- S14.** Gutter crossing profile must conform to AS2876. Gutter crossing must be poured integrally with water table, ie. the entire kerb and water table must be excavated prior to construction. The practice of breaking away the top kerb section of existing integral kerb and water table is unacceptable.
- S15.** Concrete:
- Readymix must comply with AS1379 and have a minimum compressive strength of 20 Mpa, a maximum water/cement ratio of 0.5 or slump of 100 mm.
 - Hand mix may not be used unless it complies with AS1480.
 - Surface finish: gutter crossing – smooth steel trowel, driveway – broom finish or wood float. A smooth steel trowel finish is not acceptable on driveways.
 - Colouring may be added in accordance with accepted concrete practices.
 - Reinforcement is strongly recommended, however need not be provided except in accordance with Clause S17 below. Minimum thickness must be 100 mm except in accordance with Clause S17 below.
- S16.** Paving Bricks or Blocks:
- Bricks or blocks of minimum 60 mm thick only may be used, except for commercial driveways as per Clause S17 below.
 - Bricks or blocks must be bedded in sand bedding minimum 20 mm thick spread on a base of compacted quarry rubble minimum 80 mm thick on driveways or 50 mm thick on footpaths.

OFFICIAL

- Edges must be restrained by a concrete plinth retainer in accordance with established good practice.
- Pavers shall match the colour and type of the existing footpath pavers if they are still available. Colour and type of pavers to be used shall be approved by Council.

S17. Hotmix:

- Minimum thickness 25 mm compacted, except in accordance with Clause S17 below.
- Hotmix must be laid at a temperature within 40°C of supply temperature and in accordance with established good practice.
- An approved bonding agent must be applied to base material and allowed to cure in accordance with supplier's recommendations, prior to laying.
- Base must be compacted quarry rubble minimum 80 mm thick except in accordance with Clause S17 below.

S18. Special Conditions on Non-Residential Properties:

- Concrete work: All concrete must be a minimum of 150 mm thick. F72 reinforcing mesh must be provided 50 mm above base of slab.
- Paving Blocks or Hotmix: Rubble base must be minimum 150 mm thick. Pavers must be minimum 80 mm thick. Hotmix must be minimum 40 mm compacted thickness.

S19. Protection of Works:

- During the progress of the work, the site must be protected by suitable safety barriers at all times in accordance with AS1742.3.
- If the works are left open overnight, in addition to the other safety items, at least one operating flashing amber safety light must be provided.
- Every attempt must be made to complete the work as quickly as possible.
- The site and adjoining roadway and footpath must be cleared of any excess material, spillage, form-work and tools as they accumulate.
- No material may be stockpiled on the road reserve, which includes road, footpath and verge.

S20. Satisfactory Completion:

- Any cost incurred by the Council in reinstating the road or footpath as a result of work done under this authorisation or work not completed in accordance with this authorisation that must be made good by Council, will be charged to the owner, pursuant to Section 213 of the *Local Government Act 1999*.
- Council, under the *Local Government Act 1999* has the right to rectify driveways and gutter crossings and recover costs if the construction does not conform to Council Standards.

S21. Basecourse and Sub Base:

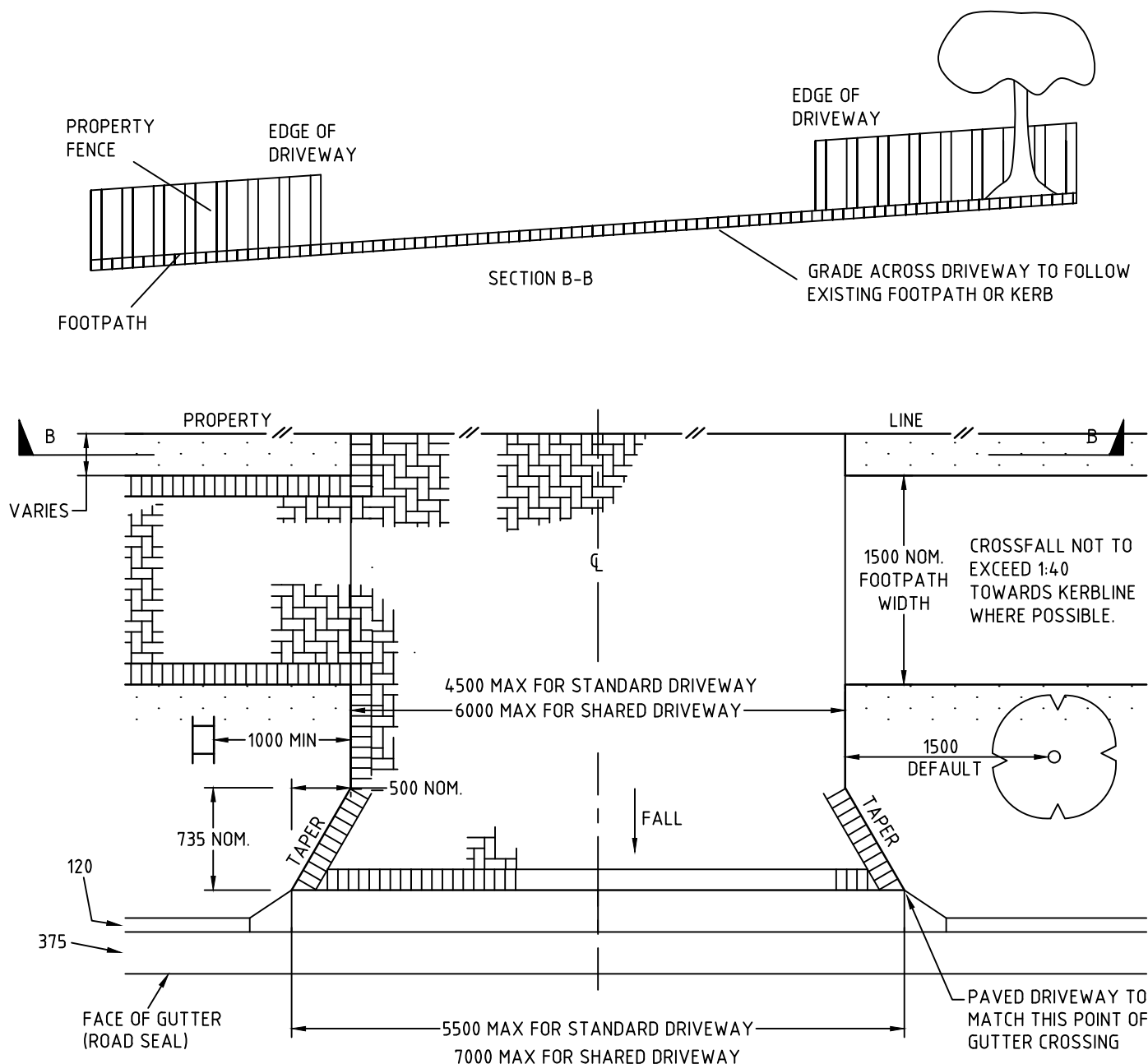
- Basecourse shall be thoroughly compacted (95% of test E2.1 of AS1289 to a thickness as specified in Table A). The materials used shall comply with DIT

OFFICIAL

specification 20 mm crushed rock PM1/20 QC basecourse, 20mm rubble PM2/20 QG sub base course.


Concrete - Crossover and Invert				
Land use	Bedding	Slab Thickness	Reinforcement	Concrete Strengths
Residential	75 mm	100 mm	F62 Central	20 Mpa @ 28
Commercial (inc. Car Parks)	150 mm	150 mm	F62 Central	20 Mpa @ 28 Days
Industrial	150 mm	150 mm	F62 Top and Bottom	20 Mpa @ 28 Days

Concrete Block Pavers				
Land use	Base Material	Bedding	Paving	Colour
Residential	80 mm	20 mm sand	Rectangular BP60 220 mm x 110 mm	Best Brick and Paving - Claret
Commercial (inc. Car Parks)	150 mm	20 mm sand	Rectangular BP80 220 mm x 110 mm	Best Brick and Paving - Claret
Industrial	150 mm	20 mm sand	Rectangular BP80 220 mm x 110 mm	Best Brick and Paving - Claret



NOTES:

1. NOMINAL DIMENSIONS GIVEN MAY BE VARIED TO SUIT PAVER DIMENSIONS
2. VARIATIONS TO PLACEMENT OF GUTTER CROSSINGS CONSIDERING EXISTING FEATURES SUCH AS TREES, PITS, STOBIE POLES ETC. TO BE CONFIRMED WITH THE ASSETS AND CAPITAL WORKS DEPARTMENT
3. ALL DIMENSIONS ARE IN MILLIMETRES

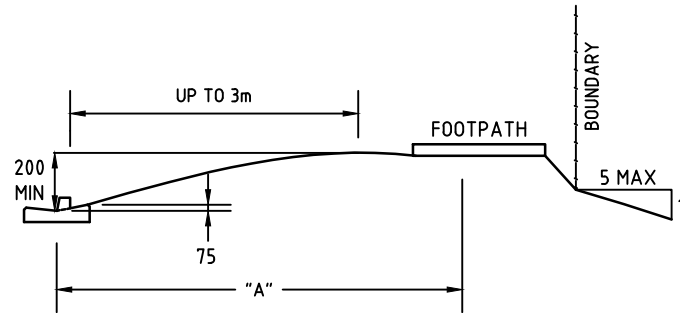
C	A.S.	08/23	FOOTPATH CROSSFALL DETAILS	11/08/2023
B	J.H.	09/10	GENERAL CHANGES AND ADDITIONS	17/01/2011
A	J.W.	10/07	AS SHOWN 	
REV.	DRN.	DATE	COMMENTS	APP'D.



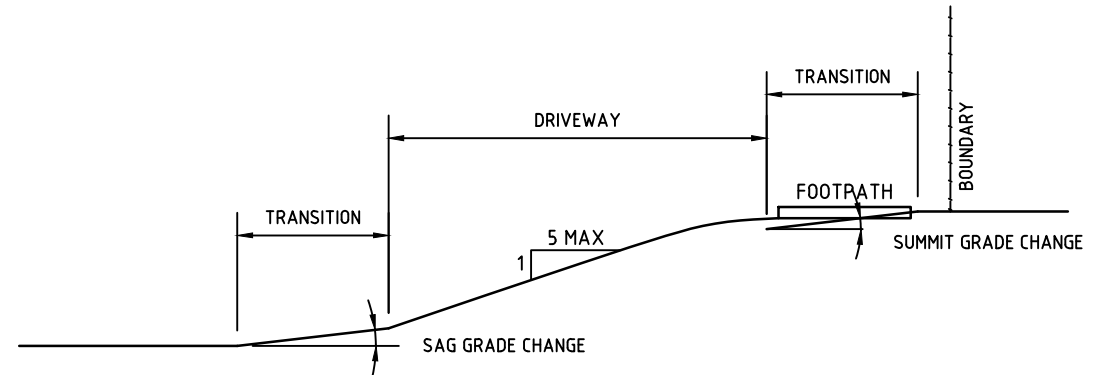
ASSETS AND CAPITAL WORKS PH 8366 4266 FAX 8366 4279

DEFAULT DRIVEWAY CONSTRUCTION STANDARDS

APPROVED	DATE	DRAWN	DATE	SCALE	DWG NO.
MANAGER, ASSETS AND CAPITAL WORKS		DORRESTYN & CO	AUGUST 1997	NTS	D4274-1-B



SECTION THROUGH DRIVEWAY
ON LOWER SIDE OF ROAD



SECTION THROUGH DRIVEWAY
ON HIGHER SIDE OF ROAD WITH FOOTPATH

NOTE:

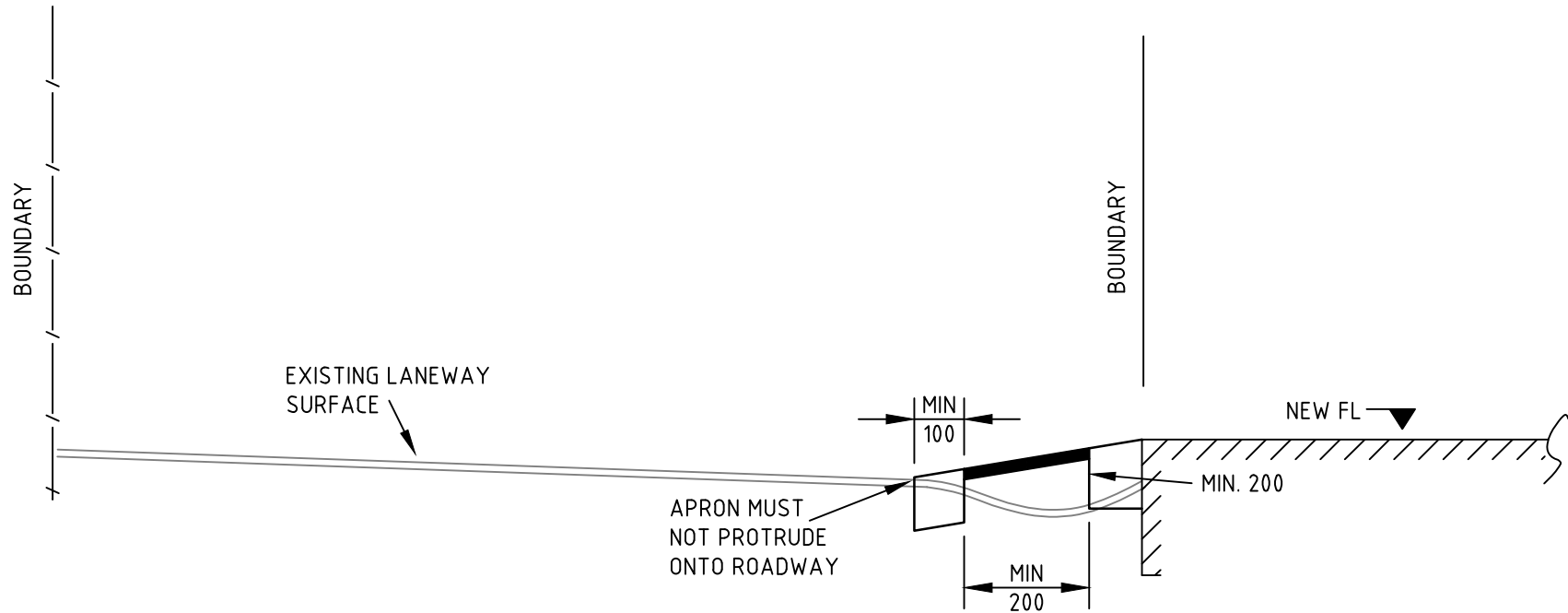
1) CHANGES OF GRADE - TO PREVENT VEHICLES SCRAPING OR BOTTOMING IN EXCESS OF -
(i) 12.5% ALGEBRAICALLY FOR SUMMIT GRADE CHANGES
(ii) 15.0% ALGEBRAICALLY FOR SAG GRADE CHANGES
INTRODUCE A GRADE TRANSITION BETWEEN THE MAIN GRADE LINES AS SHOWN.

2) GRADE TRANSITIONS - TRANSITION OF 2.0M IN LENGTH WILL USUALLY BE SUFFICIENT TO CORRECT SCRAPING OR BOTTOMING

3) "A" TRANSITION LENGTH VARIES UP TO 4000 DEPENDING ON GRADE

4) FOOTPATH CROSSFALL NOT TO EXCEED 1:40

<i>City of Burnside</i>	SCALE	Horiz. Vert.	NTS	Manager Assets & Capital Works
DEFAULT DRIVEWAY GRADE STANDARDS	SURVEYED			D4274-19
	DRAWN	J.W.	08/23	
	DESIGNED	A.S.	08/23	
	CHECKED	A.S.	08/23	



NOTE:

1) CONCRETE RAMP, LOCATION AND DIMENSIONS TO BE SPECIFIED BY CERTIFIED ENGINEER ENGAGED BY THE RESIDENT-OWNER AND INCLUDED IN THE APPLICATION.

NEW CONCRETE RAMP IN A LANEWAY - SECTION

<i>City of Burnside</i>	SCALE	Horiz. Vert.	NTS —	Manager Assets & Environment
DEFAULT DRIVEWAY RAMP IN LANEWAY	SURVEYED			D4274-1H
	DRAWN	J.W.	08/23	
	DESIGNED	C.P.	08/23	
	CHECKED	D.H.	08/23	